

THERMAL MANAGEMENT (TM) SERIES

TM220, TM250

HVAC Control with Independent Sensor Monitoring:

- Temperature & Contact Closure Sensing
- Single or Dual Stage Heat/Cool Control
- Humidity Sensing & Control (TM250)



Product Highlights

- Web Server Technology
- Web Browser Configuration
- E-mail Status and Fault Reporting
- Secure Internet Monitoring and Control
- Reliable TCP/IP Communications
- Wired Ethernet
- UL & ENERGY STAR Rated

Thermal Management Series Network Thermostats The Thermal Management Series of Proliphix Network Thermostats combine all the same sophisticated HVAC and Internet features of our Network Thermostat (NT) Series but also include the added capability of independent alarming on two external sensor inputs. These two inputs can either sense temperature with our standard line of thermistor sensors, or sense the closure of an external relay. With these additional features the Thermal Management Network Thermostats are best suited for very light commercial facilities which require inexpensive remote HVAC management along with refrigeration or freezer monitoring. Internet connectivity and the thermostat's browser interface offer unprecedented ease of configuration, monitoring and management capabilities at a fraction of the cost of current programmable communicating thermostats and thermal monitoring products.

Secure, Remote Monitoring and Management Proliphix Thermal Management Series Network Thermostats feature standard Internet browser-based configuration and control over a secure Ethernet connection. Remote management and monitoring are available over secure and authorized broadband connections to the Internet. Proliphix TM Series Thermostats can deliver e-mail status and alerts¹ to any PC or mobile text messaging device. An owner/operator or facilities manager can monitor, diagnose and control HVAC systems from a remote location. Now imminent equipment malfunctions or employee thermostat tampering will never again go unnoticed.

TM220 & TM250 In addition to the distinctive independent alarming features of both the TM220 and TM250 Network Thermostats, they share identical features except that the TM250 was designed to sense and control relative humidity in a single HVAC zone. Pre-defined relative humidity limits may trigger dehumidification by forcing on the A/C system or by triggering a relay to actuate an external dehumidifier. E-mail or text message alarm notifications may also be sent if relative humidity exceeds a pre-defined threshold or falls below a pre-set lower limit.¹

Note 1: With FREE subscription to Proliphix Remote Management Service or alternatively via Syslog.

Independent Sensing Features

E-mail or Text Message Reporting¹

- High and Low Temperature Alarm
- Time-Based Contact Closure Sensing

Thermostat Features

Humidity Sensing & Control (TM250 only)

- AC dehumidification
- External dehumidifier

Compatible with most HVAC Systems

- Fossil Fuel – 2h/2c
- Heat Pumps – 2h/2c w/AUX Heat

Fahrenheit/Celsius Support

Auto Changeover

Fan Scheduling

Keypad Lockout w/Override Limits

HVAC Control

- Heat/Cool Cycle Limits/hr
- Configurable Setpoint Deadband
- Fan Control on Heat
- Hold Mode Adjustable Timeout

Flexible Temperature Scheduling

- 366 Day Programming
- 4 Temperature Periods per Day
- Special Day Schedules

E-mail or Text Message Reporting¹

- High and Low Temperature Alarm
- Filter Change Reminder

Network Settings

- Secure Password Authentication
- Static/DHCP Addressing
- Class A, B, C Addressing
- Network Access Filters
- Syslog Messaging

Multiple Power Options

Failsafe Low Temperature Switch

ENERGY STAR Compliant

Benefits

HVAC Management

- Remote Monitoring & Control
- Remote Alarm Notification

Applications

- Quick Service Restaurants
- Casual Dining Establishments
- Convenience Stores



PROLIPHIX

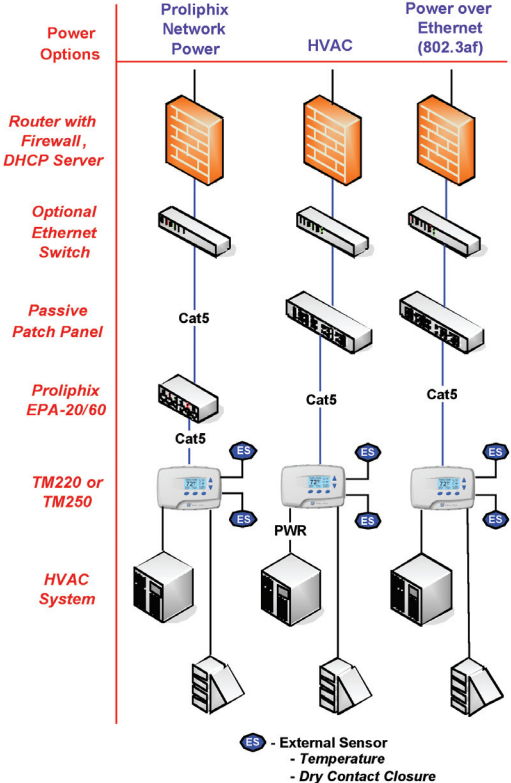
THERMAL MANAGEMENT (TM) SERIES

TM220, TM250 HVAC Control with Independent Sensor Monitoring:

- Temperature & Contact Closure Sensing
- Single or Dual Stage Heat/Cool Control
- Humidity Sensing & Control (TM250)

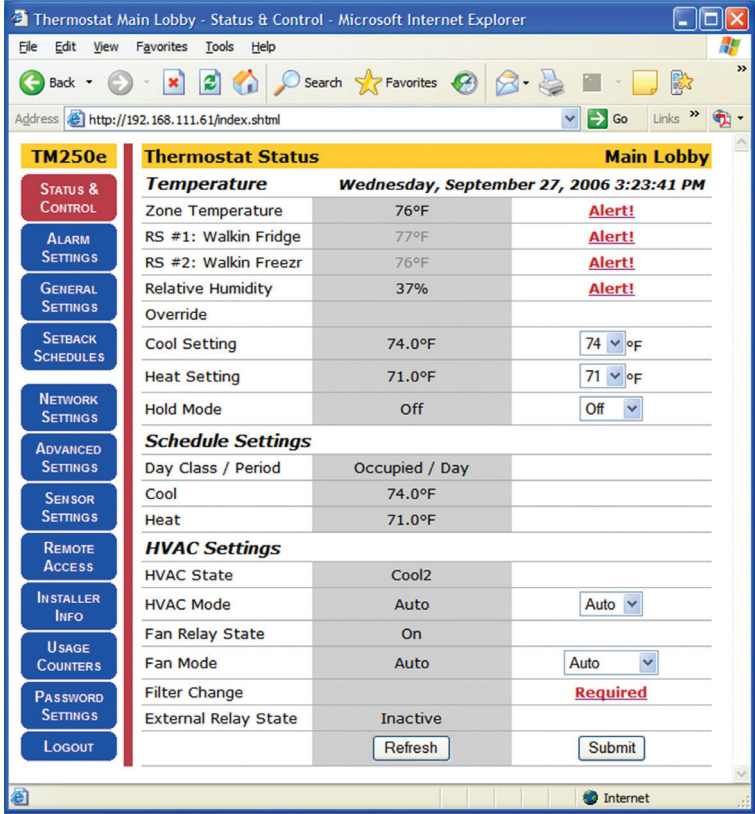
Typical Network Installation

The Proliphix Thermal Management Series of Network Thermostats are easily installed in a wired LAN setting by terminating conventional Cat5 cable to the thermostat terminal block.

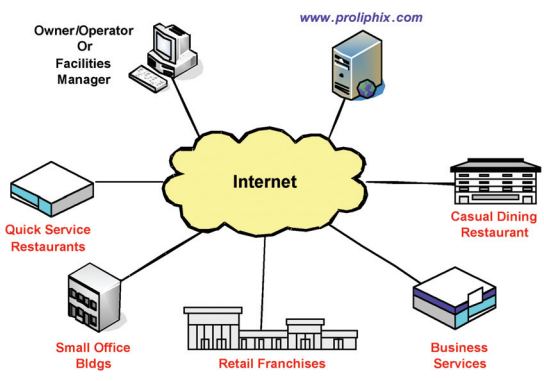


Thermostat Management Interface (TMI)

The default status page is organized to clearly display the most important current status, settings and alarm notifications



Remote Management



Power Options	TM220h/250h	TM220e/250e
HVAC System Power	X	
Power over Ethernet – 802.3af		X
Proliphix Network Power – EPA		X

Specifications

- Operating Temperature: -10°C to +40°C
- Dimensions: 5.5" x 3.5" x 1.5"
- Shipping Dimensions: 7.5" x 5.5" x 2.25"
- Weight: .75 lb
- Agency Approvals: FCC, UL, ENERGY STAR
- Warranty: 1 Year Limited Warranty

Product features and availability are subject to change without notice. Please contact Proliphix or visit our website for more information. Rev 1.0