



P R O L I P H I X

Internet HVAC Control

PRO

PROFESSIONAL SERIES THERMOSTATS

NT120, NT130, NT150, NT160

Programmable & Communicating Network Thermostats

- Supports 2 Remote Indoor or Outdoor Thermal Sensors
- Web Server Technology



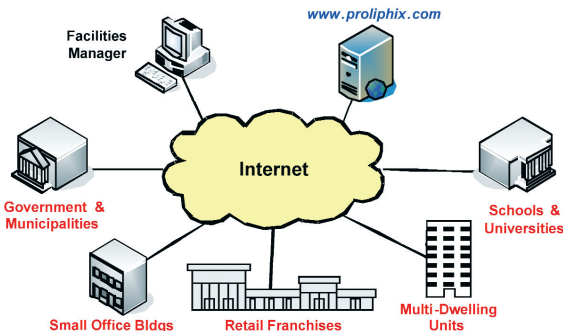
Product Highlights

- Web Browser Configuration
- E-mail or Text Message Fault Reporting
- Multi-year Scheduling
- Standards-Based TCP/IP Communications
- Secure Internet Monitoring and Control
- UL & ENERGY STAR Rated

Professional Series Network Thermostats Proliphix Network Thermostats take full advantage of ubiquitous Ethernet networks and the Internet to utilize the converged business network for HVAC control. The Proliphix Network Thermostat product line is compatible with typical HVAC systems and offers all the features expected by commercial installers and system integrators. Internet connectivity and the thermostat's browser interface offer unprecedented ease of configuration, monitoring and management capabilities at a fraction of the cost of current programmable communicating thermostats.

Secure, Remote Monitoring and Management Proliphix Network Thermostats feature standard Internet browser-based configuration and control over a secure Ethernet connection. Remote monitoring and control are available over secure and authorized broadband connections to the Internet. Proliphix Network Thermostats can deliver e-mail status and alerts¹ to any personal computer or mobile text messaging device. A service provider can monitor, diagnose and control HVAC systems from a remote central location. This allows the provider to offer unprecedented energy management and service to its customers, and creates new service revenue opportunities.

Remote Management Applications



Features & Advantages

- Independent Fan Scheduling
- Keypad Lockout
- Temporary Manual Override
- Fossil Fuel or Heat-Pump Systems
- Multi-Stage Support
- Remote Alarm Notification
- Advanced Scheduling Capability
- Sophisticated Networking Configuration
- Advanced Energy-Saving HVAC Settings
- Multiple Power Options
- Failsafe Operation
- ENERGY STAR Compliant
- UL & CSA Certified

Benefits

- Superior Energy Management**
 - Automatic DST Support
 - 366-Day Programming
 - Advanced HVAC Settings
 - Temporary Manual Override
- Optimized Time Management**
 - Remote Schedule Changes
 - Remote HVAC System Changes
 - Remote System Monitoring
 - Remote Alarm Notifications

Power Options

	h	e
HVAC System (24Vac, common)	X	
Power over Ethernet – 802.3af		X
Proliphix Network Power – EPA		X

Ordering Examples: NT120e, NT160h

Specifications

- Operating Temperature: -10°C to +40°C
- Dimensions: 5.5" x 3.5" x 1.5"
- Shipping Dimensions: 7.5" x 5.5" x 2.25"
- Weight: .75 lb
- Agency Approvals: FCC, UL, ENERGY STAR
- Warranty: 1 Year Limited Warranty

Note 1: With FREE subscription to Proliphix Remote Management Service or alternatively via Syslog.

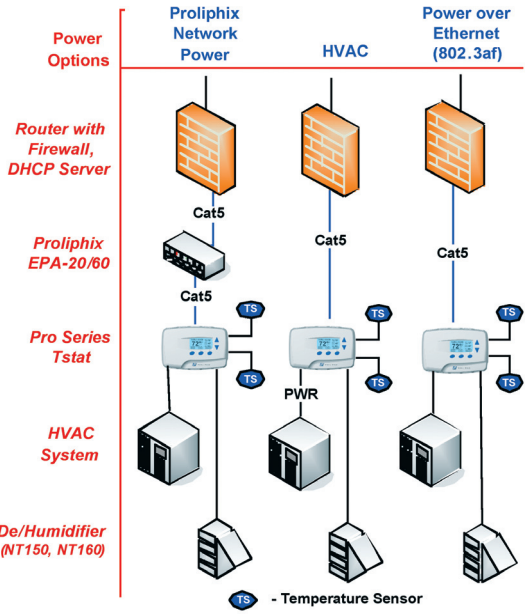


PROFESSIONAL SERIES THERMOSTATS

NT120, NT130, NT150, NT160

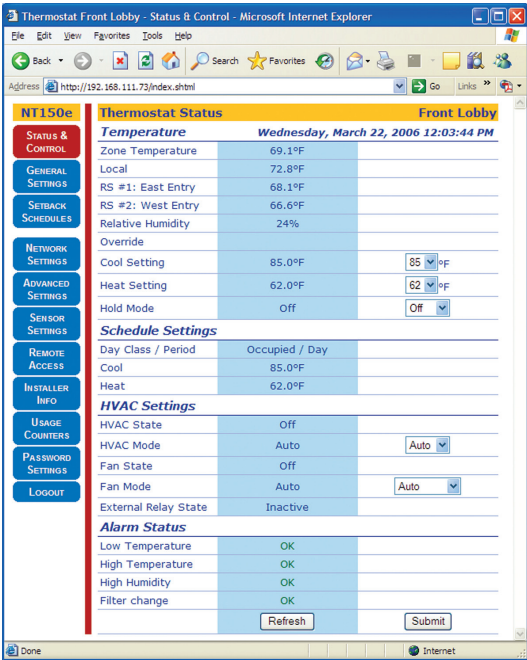
Typical Network Installation

The Pro Series Network Thermostat is easily installed in a wired LAN environment by terminating conventional Cat5, Cat5e or Cat6 cable to the thermostat terminal block.



Thermostat Management Interface (TMI)

The default status page is organized to clearly display the most important current status and settings of the Pro Series thermostats.



Key Features

	NT120	NT130	NT150	NT160
HVAC Systems				
• Fossil Fuel – Gas/Oil, 2H/2C	X	X	X	X
• Heat Pump/AC – Electric, 3H (Aux heat)/2C	X	X	X	X
Auto Changeover	X	X	X	X
Auto Daylight Savings	X	X	X	X
Hold Mode Timeout Options	X	X	X	X
Broad Temperature Range (40F to 99F)	X	X	X	X
Fahrenheit / Celsius	X	X	X	X
Clear, Backlit Graphic LCD	X	X	X	X
Unique Thermostat Naming	X	X	X	X
ENERGYSTAR Compliant	X	X	X	X
FCC Class B Compliant	X	X	X	X
UL, CSA Certified	X	X	X	X

Advanced Features

	NT120	NT130	NT150	NT160
Usage Counters	X	X	X	X
Failsafe Temperature Switch	X	X	X	X
Fan (Period) Scheduling	X	X	X	X
Adjustable 2nd Stage Offsets	X	X	X	X
Keypad Lockout w/Override Limits	X	X	X	X
One Button Override (OBO)		X		X
Adjustable Compressor Delay	X	X	X	X
2nd Stage Turn-on Delay	X	X	X	X
Fan Control on Heat	X	X	X	X
Adjustable Setpoint Deadband	X	X	X	X
Max Heat/Cool Cycles per Hour	X	X	X	X
Maintenance Contact Info	X	X	X	X

Scheduling

• 4 Periods per Day	X	X	X	X
• 366 Day Programming	X	X	X	X
• Scheduling to 3 years	X	X	X	X
• 30 Special Day Groups	X	X	X	X

Alarm Types

• Filter Change Reminder	X	X	X	X
• Below Low/Above High Temperature	X	X	X	X
• Above High Humidity			X	X
• Contact Closure (w/settable presence interval)			X	X

Internal Temperature Sensor

• Adjustable Temp Offset	X	X	X	X
• Algebraic Temp Averaging	X	X	X	X

External Sensor Inputs (2)

• Adjustable Temp Offsets	X	X	X	X
• Algebraic Temp Averaging	X	X	X	X
• Type – Wired Thermistor, Analog	X	X	X	X
• Type – Dry Contact Closure			X	X

Humidity Control

• AC cycling			X	X
• External De/Humidifier			X	X

Aux Relay Control

• Adjustable Polarity			X	X
• Actuation Conditions				
Above/Below Humidity Threshold			X	X
Below Low/Above High Temp Threshold			X	X
On Fan Activation			X	X
Clock (Period) Scheduled			X	X

Network Features

	NT120	NT130	NT150	NT160
Web Browser Graphical Interface	X	X	X	X
Static/DHCP Addressing	X	X	X	X
Settable Gateway Address/Address Mask	X	X	X	X
Selectable Firewall and HTTP Ports	X	X	X	X
Supports Class A, B, C IP Addressing	X	X	X	X
Selectable Address Access Filter	X	X	X	X
Syslog Support	X	X	X	X
HTTP Password Authentication	X	X	X	X
Alarm Reporting				
• 4 E-Mail/4 Text Message Accounts ¹	X	X	X	X

Note 1: With FREE subscription to Proliphix Remote Management Service or alternatively via Syslog.